

1930

1980



GOLDEN JUBILEE

HART SCOUT RESERVATION
PHILA. COUNCIL BOY SCOUTS
OF AMERICA



PHILADELPHIA COUNCIL BOY SCOUTS OF AMERICA

22nd and Winter Streets

Philadelphia, Pa. 19103

LOcust 4-2540

June 1980

Dear Fellow Scouter:

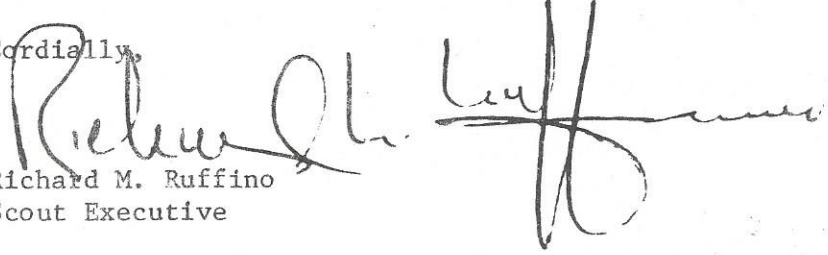
I approach the task of writing a letter to be included in the "50 Year History" of the Hart Scout Reservation with deep pride and humility. Hart Scout Reservation has been a truly outstanding laboratory for Scouting, with its proven ability to train Scouts in leadership development and appreciation of a code of ethics expressed, in boy language, in our Scout Oath and Law.

As I reflect over my many years in Scouting, most of the adults and young people with whom I have come in contact share their camping experiences as the highlight of their growth through Scouting. Camping has always been an integral part of the Scouting program, and our history as a movement, without camping, could not be written.

May I thank each of you for the dedicated time and years of service you have given on behalf of Scouting, and encourage your ongoing commitment and participation for the future of Scouting in our city and our nation.

God bless you all - and continued good Scouting!

Cordially,


Richard M. Ruffino
Scout Executive

RMR:RMM



A United Way Agency



Our Golden Anniversary Booklet is Dedicated to

DR. CHARLES D. HART
COUNCIL PRESIDENT 1913 - 1941

HART SCOUT RESERVATION

HISTORICAL BACKGROUND

When Delmont Council (now Valley Forge Council) purchased the land for Camp Delmont, the stream flowing thru the property was named Swamp Creek. Later they petitioned the United States Department of Survey and requested the name be changed to Unami Creek, which was approved. Consequently today the creek carries the name of Unami while the road along the creek is still Swamp Creek Road.

In late 1929 it was evident that additional grounds were needed for the summer camping program. The Camping Committee and the director of the department inspected literally hundreds of potential camp sites ranging from the Poconos to the Chesapeake Bay and from the Atlantic to the Susquehanna River.

Early in 1930, Dr. Charles D. Hart, a private physician, was in the brokerage firm of Drexel & Co. and heard several men talking about a farm or two that was for sale on Swamp Creek near Sumneytown, Pa. He obtained the pertinent information about the land and the owners and drove up to see them and the land. At the next Council Board Meeting he announced that he had paid a retainer on the property and requested Board approval to purchase the land for a camp. Approval was given and the property was purchased for approximately \$65,000.

By direction of the Council it was named the "Charles D. Hart Scout Reservation" which today has been shortened to the "Hart Scout Reservation". The camp originally was nearly 400 acres and included a large barn on the West side of the creek, which was remodeled to accomodate 60 campers and was dedicated as the "Harry Maybin Hart Memorial Lodge" in honor of a pioneer member of the Council.

A dam was constructed across the creek which separated the camp property. During 1932, a summer camp was conducted there for boys whose troops could not go to Treasure Island and the Memorial Lodge was used for their housing. This sort of housing did not prove satisfactory for summer camping and in 1933 it was only operated for one week for a special camp.

In 1934 four mess hall kitchen units were erected for as many troops. These sites make up the Pioneer Camp as we know it today. Tents were set up and an artesian well and latrine were constructed on the east side of Unami Creek which flowed thru the property. The units did their own cooking and provided their own program under the general supervision of the permanent camp staff. This scheme proved popular and attendance increased over the ensuing years.

The following Camp Promotional News is from Quaker City Scout.

"These 4 sites were designated as the "Pioneer Camp" in memory of 4 great pioneers. Daniel Boone, Kit Carson, Davey Crockett and William Bridgen. The names of Boone, Crockett and Carson need no justification and little explanation in a list of American outdoorsmen and the adventures of Bridgen are equally thrilling and important. Will-

iam Bridgen was a pioneer who lived in the middle nineteenth century and discovered the section now known as Yellowstone National Park. He was the first white man to set foot in that area.

Much in the same sort of way the Scouts of Philadelphia can today have the thrills, the joys, the happiness of a discoverer like Bridgen, for the Hart Scout Reservation provides a taste of comparative wilderness for those who spend most of their lives in the city. The Ice Age has left its mark on the place now known as the Pioneer Camp. High boulders remain as mute tokens of that time. Cedar and juniper trees abound throughout the whole area. Big trees are common.

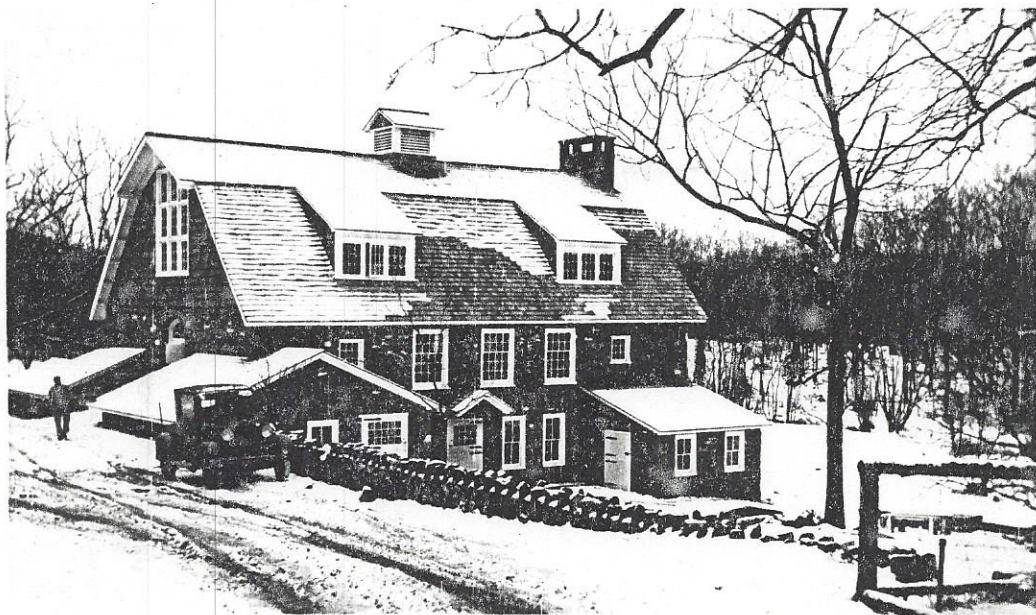
The people responsible for developing this camp have been wise enough to go right into the woods and build delightful and interesting camp sites there. As a fellow drives along the creek road, which in the best of times is probably no better than some of the roads the prairie schooners used in approaching the Alleghenies, he gets deeper and deeper into a fine stand of timber. The road winds for several miles along a creek that often pounds furiously along its rocky bed and then approaches a heavily wooded section. In a little clearing on the left is a reconstructed farmhouse, itself more than a hundred years old and now used as the Unami Lodge House. A short distance beyond is the Trading Post and to the right is the entrance to the Pioneer Camp. From the roadway a fellow cannot see any evidence of campsites but after a hike thru the woods he discovers an open pavilion used as a kitchen-dining hall and just to its right a leanto. Later he discovers that this is where his scoutmaster and the other leaders will live and in a circle in the midst of the trees, sometimes hidden by the brush, are a series of tents where he and his buddies will stay for a week or two. These are raised on platforms and make fine living quarters.

Like Bridgen, campers here get themselves settled and with the other fellows in their patrols start the preparation of supper. They are true pioneers, since upon their own initiative and enterprise will depend their enjoyment of the camp. They cook their own meals, organize their program and carry on very much like any group of fellows might who are in the deep northwest or the mountain fastnesses of New England. Further evidence of pioneer living is the trekking in of food supplies, fellows using buck-saws to prepare wood for the fire and doing those things which make life comfortable in the out-of-doors.

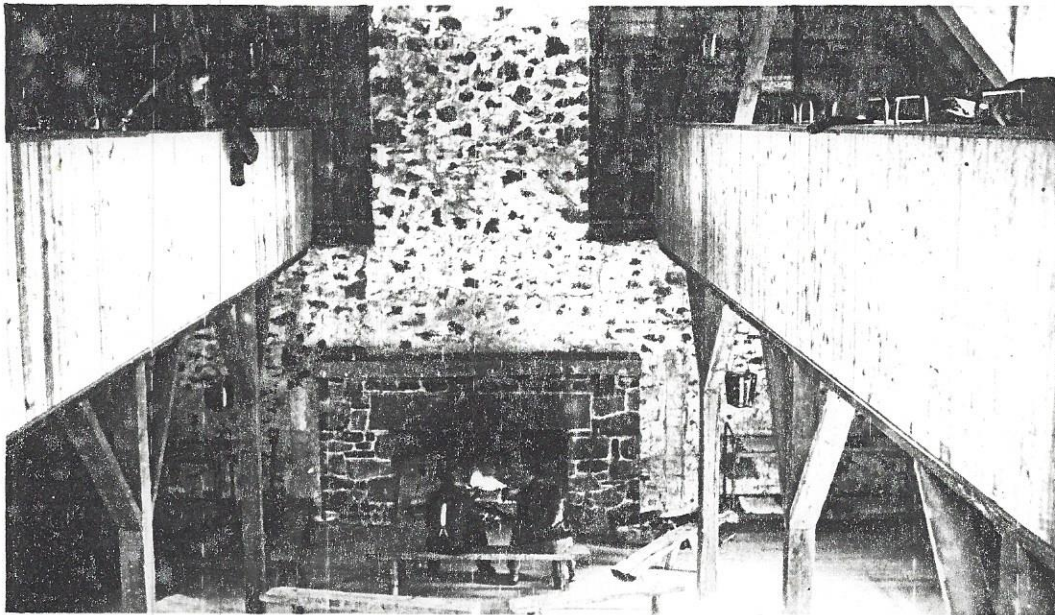
Each troop site is equipped with a building used as a kitchen-dining hall, tables, benches, field range, tents, cots, board floors, etc. Four troops share an artesian well and a modern latrine.

In addition to these creature comforts, the camp supplies the services of a resident staff consisting of a camp chief, available to review, plan and help in supervising troop programs while in camp, a naturalist, to give instruction, lead hikes; a water-front leader, to help supervise the swimming, boating and canoeing and give instruction in the same. Staff men are available for other services; to advise with menus, campsites, hikes, scoutcraft and first class reviews.

Each troop supplies its own cooking and eating equipment, axes, brooms, lanterns, etc. The troop is also responsible for its pro-



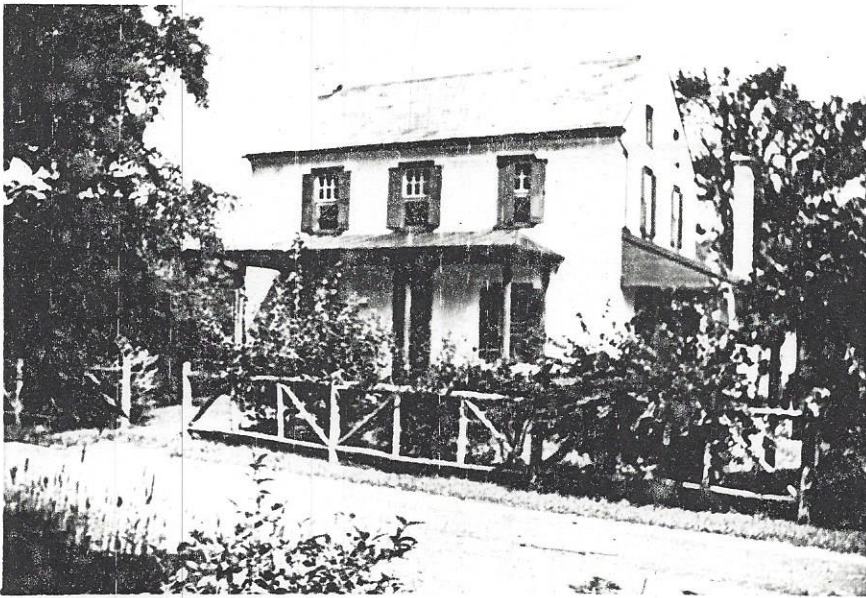
Exterior
Hart Memorial
Lodge 1933
Perry Long's
Car



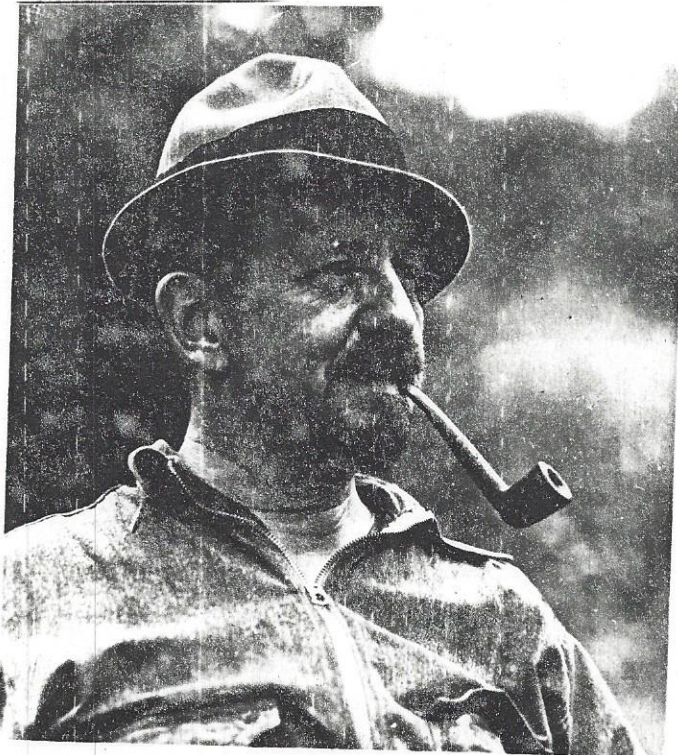
Interior
Hart Memorial
Lodge 1934



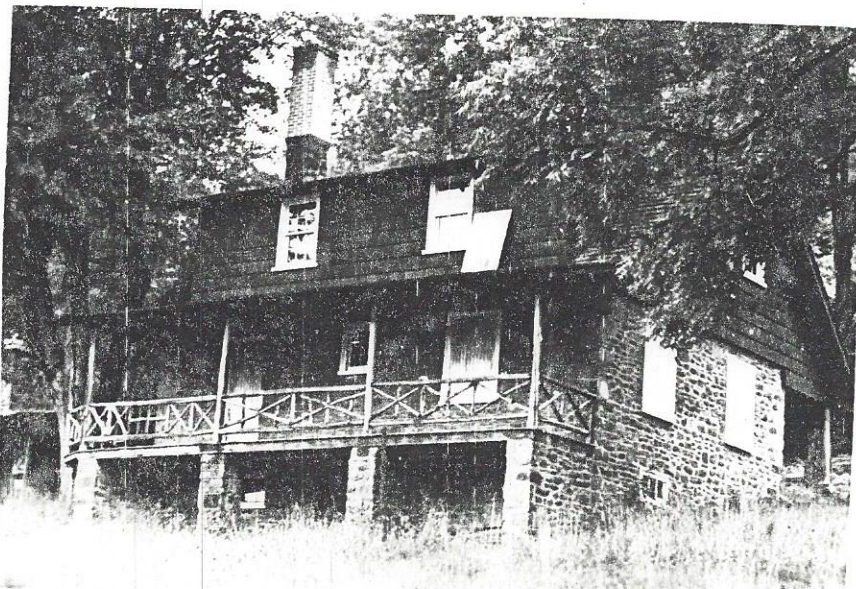
Dam under
Construction
Unami Creek
1934 - cost
of \$20,000



Unami Lodge
House about
1934



"Uncle" Rufe Davis
Camp Director 1934



Maple Lodge
formerly overnight
quarters for troops.
Now Rangers Residence.

gram, including religious exercises, hikes and all other component parts, remembering always that the staff is available to help support or augment but not to substitute for the troop leadership.

There is a thrill which comes to a fellow at the end of a day when, with memories of that morning's bird hike or a canoe trip up the creek or a campcraft project completed, the larder well stocked and he is tucked into warm bedding, he looks thru the folds of his tent to see a beautiful starlit sky and realizes that this is the same sky that looked down on William Bridgen, Kit Carson, Davey Crockett, Daniel Boone and pioneers of another day much as it now looks down upon the pioneers of the present."

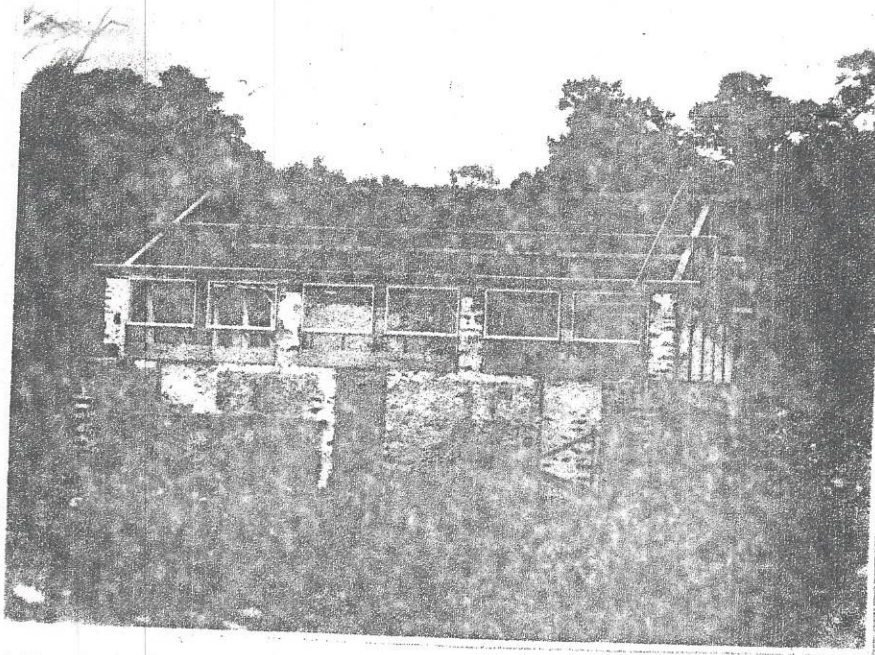
The above reprinted from "Quaker City Scout" June 1936 issue.

The old farmhouse, mentioned previously, is now the Unami Lodge House and from funds provided by Unami Lodge, the building was reconditioned in 1935.

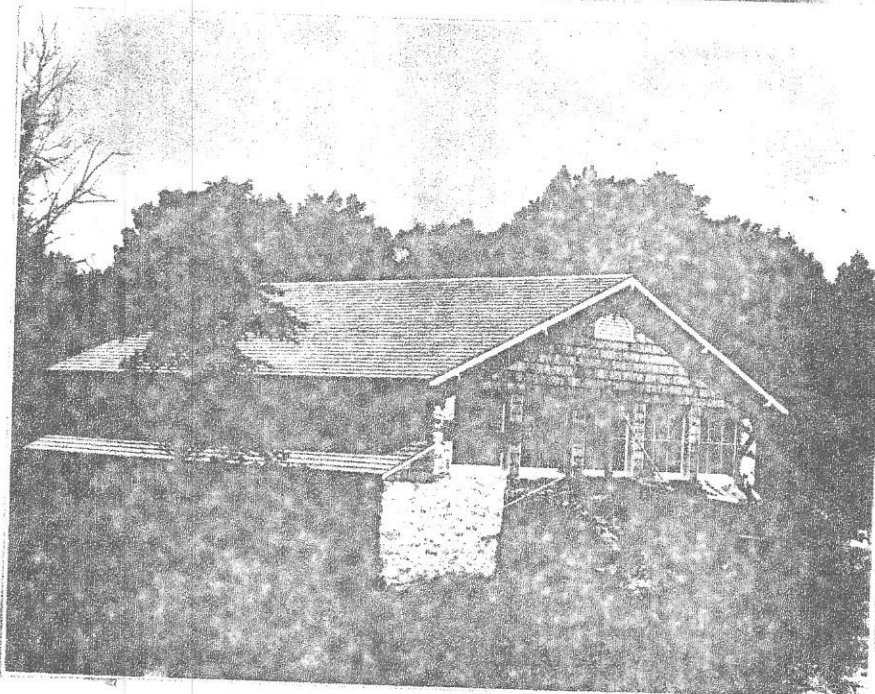
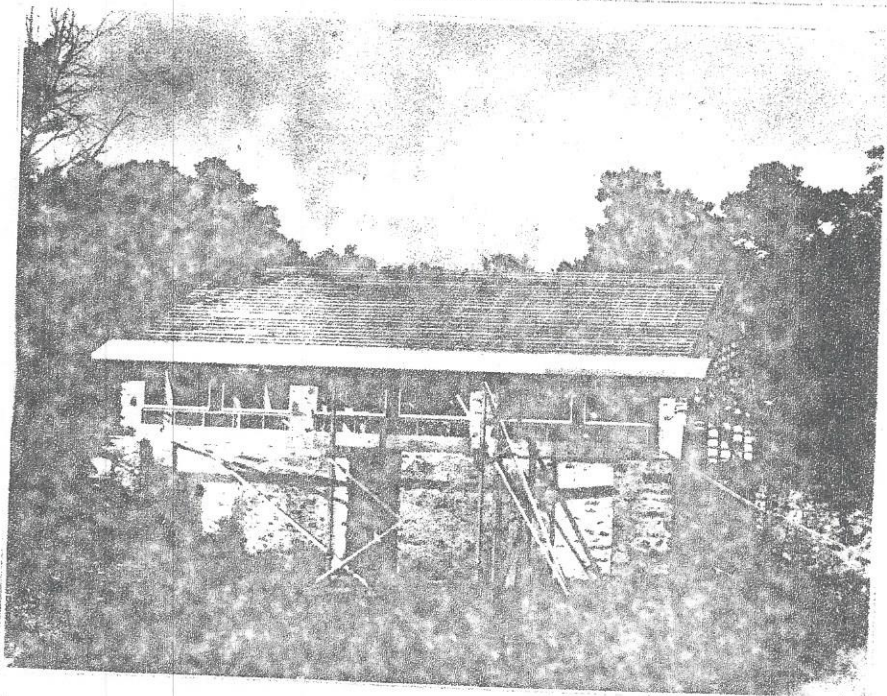
In the year 1935, Chiefs Camp opened with Chingachgook the only site in use. The following year in 1936 the remainder of the Chiefs Camp began operation with Tedyuscung, Tamanend and Plenty Coups sites being added. The same year the Staff lean-tos and the East Camp Trading Post were used. In 1938 Unami Lodge was first used as the Staff lodging and dining hall.



H. Paul Keebler, Camp Director in 1935 is in the center of the picture.



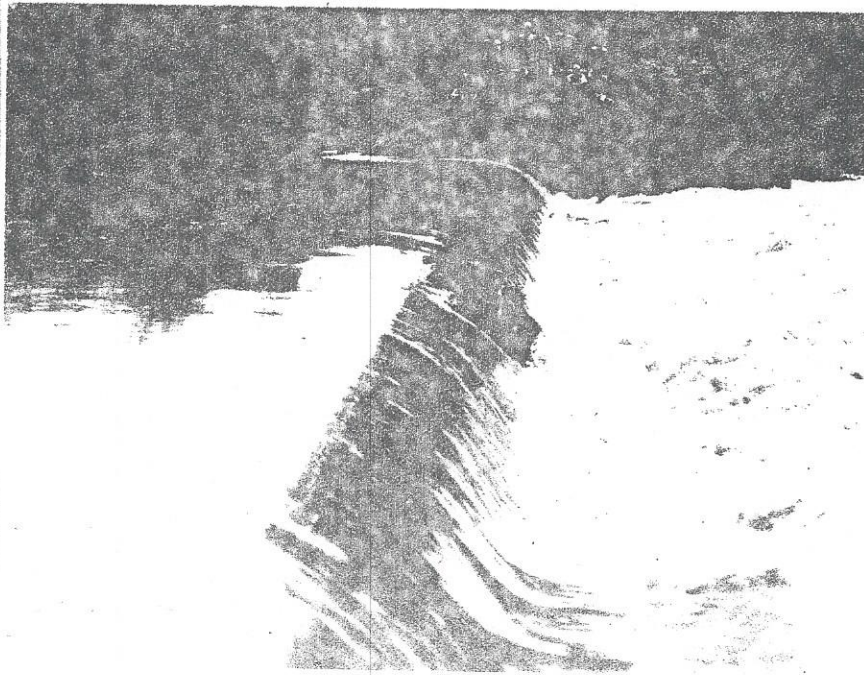
East Camp-
Trading Post
and Country
Store under
construction.



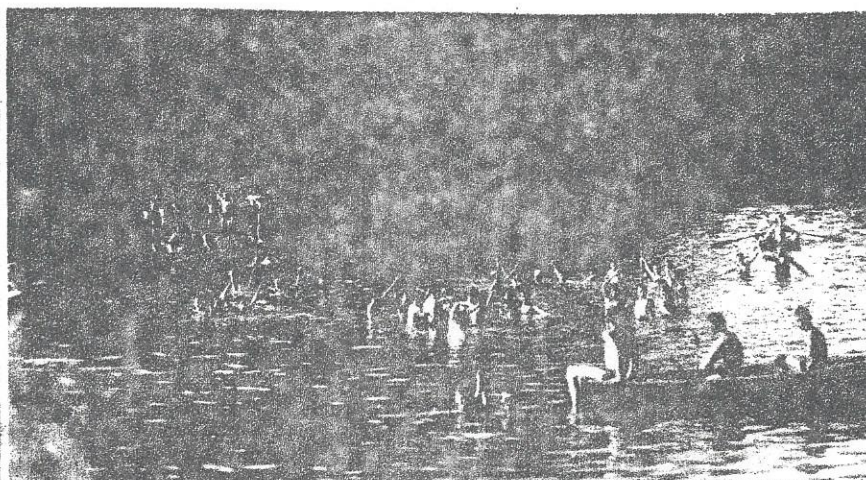
Completed



Early
Ceremonial
Grounds



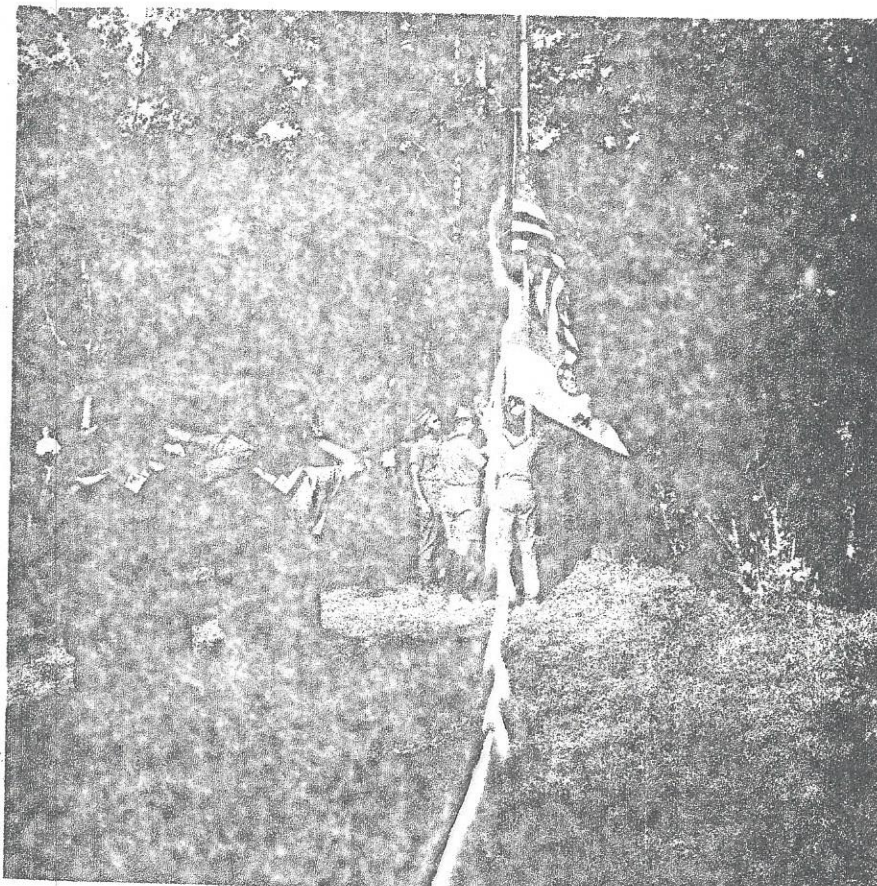
Dam



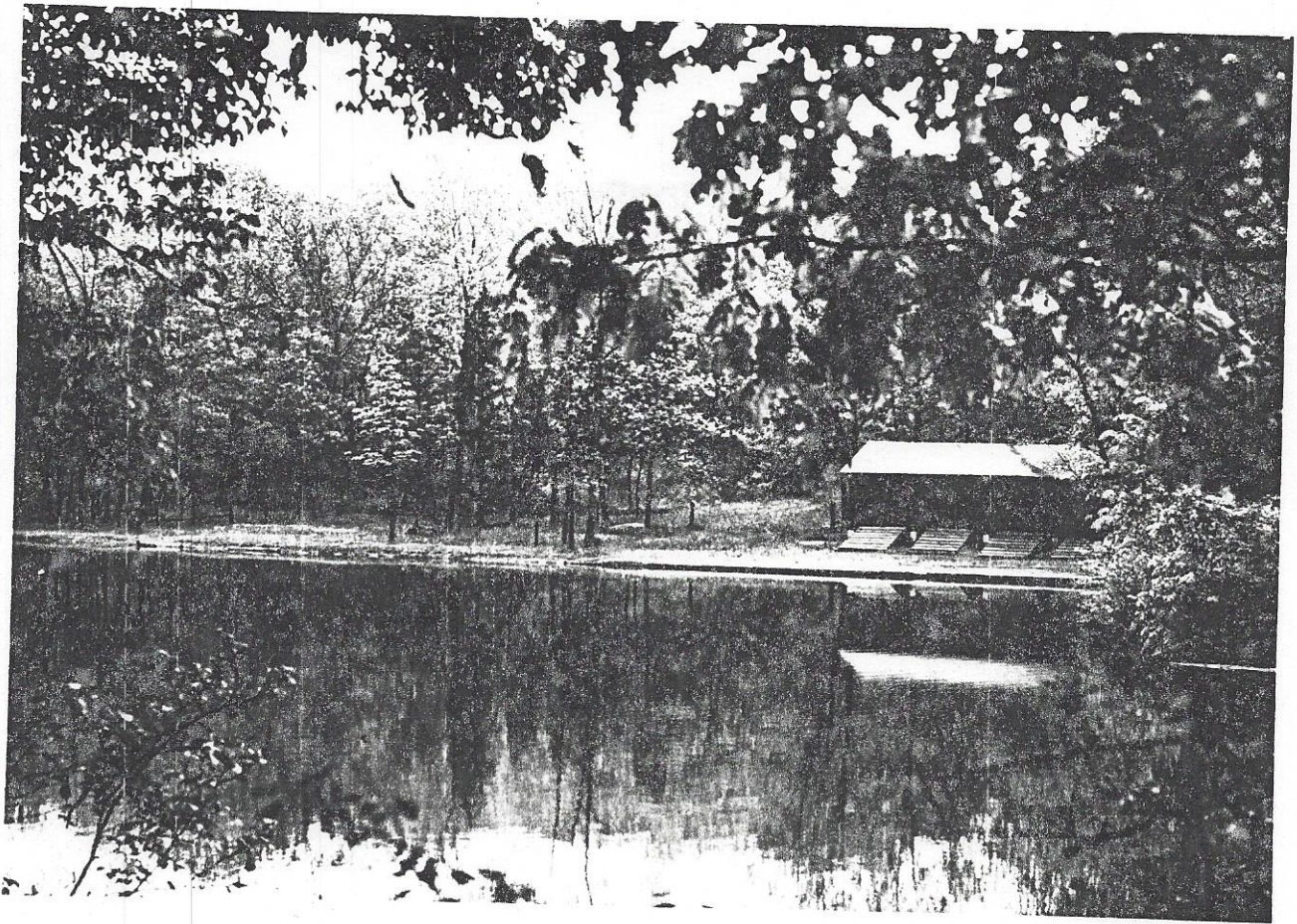
Swimming
in Unami
Creek



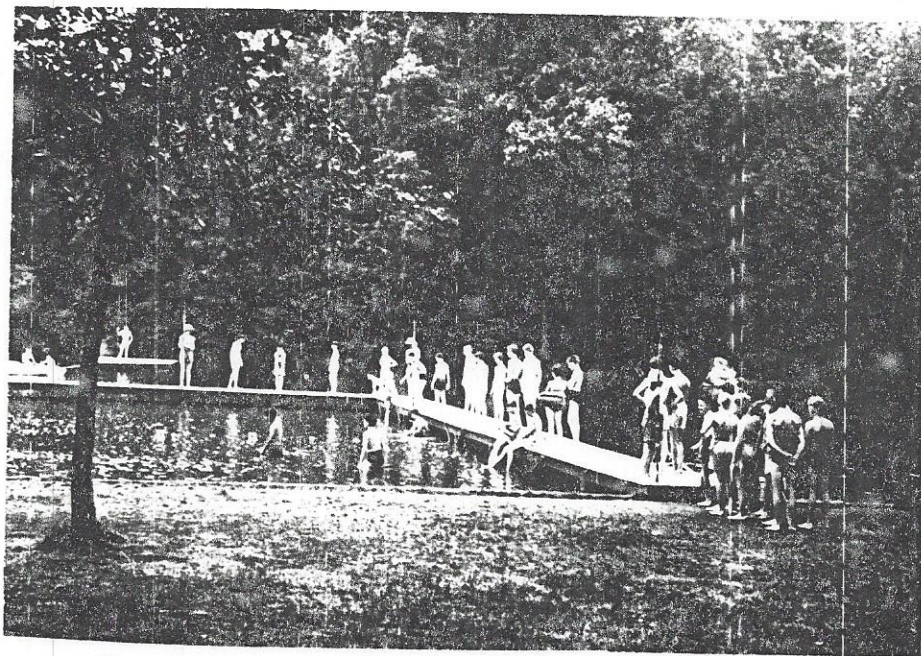
Colors East Camp



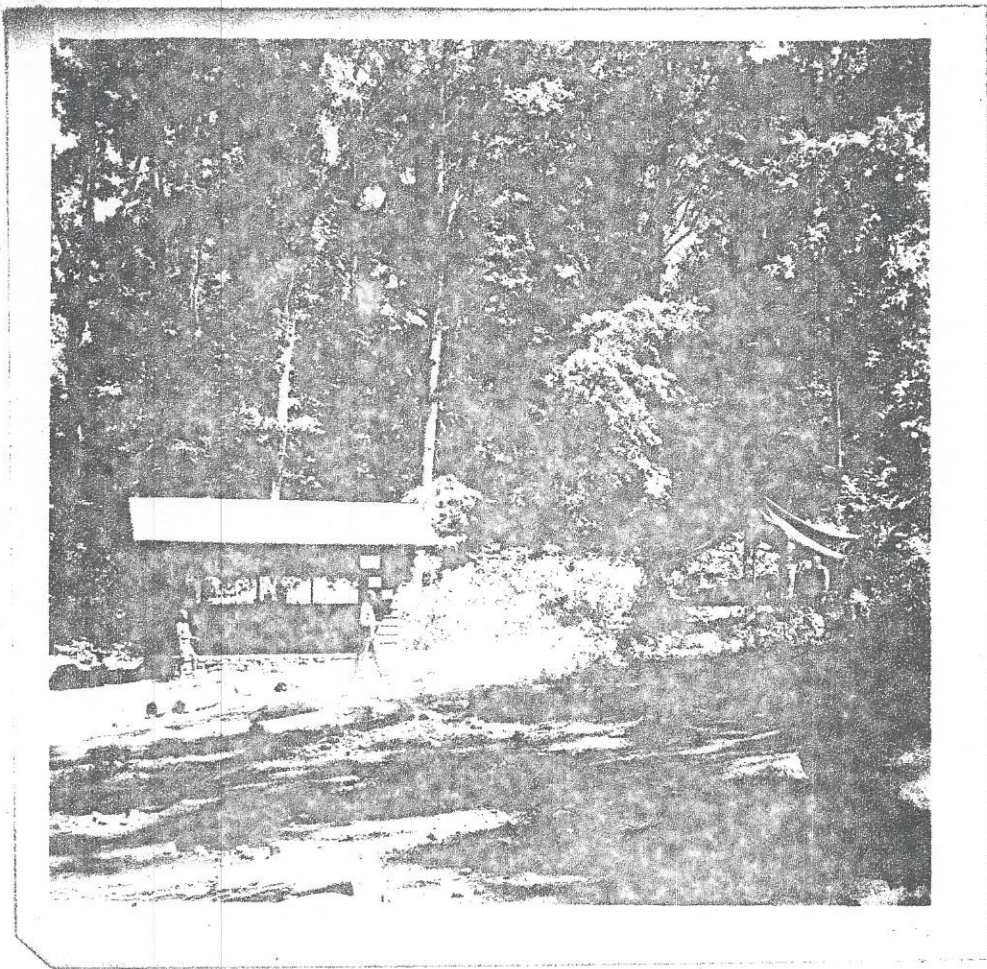
Color : East Camp



Hart Lake and Boathouse



In the early days swimming was done in Unami Creek near the dam and Boathouse.



One of the
original East
Camp sites.



Before Bouncing
Betsy

The "H. Paul Keebler Memorial Wall" erected in front of the Dining Hall was made possible thru contributions from his friends in Woodland District and dedicated in October 1969.

Over the next twenty some years the camp staff increased from 15 to 55 which pointed to the tremendous growth of the camp. Other additions to the East Camp in the late "50s" -----

1954 opening of the Health Lodge
1956 suspension bridge "Bouncing Betsy" was built and now connects the East and West Camps
1959 East Camp QM erected and put into use that year

A comprehensive plan for the further development of the Reservation was prepared in the years 1944 to 1947 with the plan calling for a new camp unit on the West Side of the Unami Creek with facilities for 250 additional campers and cabins for the families of the Camp Staff. The plan was never realized, and then only in part, until after 1955.

THE PRESENT WEST CAMP

Extensive development of Hart Scout Reservation took place in the years following the 1955 Camp Development Campaign. A 250 boy camp was added to the West Side of Unami Creek and a 45'x120' Swimming Pool was constructed. Five Staff Family Quarters were added. In 1957 Korman Lodge was completed as a gift from the Korman Family and for the use of the Jewish Chaplain at summer camp. Korman Lodge is now used as one of the family cabins. A Dining Hall, Office, Nature Lodge, Cook Quarters, Showers, Parking Lot, Rifle Range, Staff Leantos and Winter Cabins were all part of the new camp. Troops camping in the East Camp had a choice when it came to the method of feeding. They could cook all three meals each day or have them prepared in the West Camp kitchen and delivered to their campsite in what was known as "heater stacks". An additional 78 acres were purchased in 1964. This was known as the Zeigler Tract. The size of Hart Scout Reservation now totals nearly 600 acres of prime hiking and camping land.

In 1961 the newest addition was the Order of the Arrow Ceremonial Grounds which was financed by the Order of the Arrow in the amount of \$2500. This project was started by the Camp Ranger, Perry Long, cutting trees and clearing an area which is 54'x75'. Four sections of seats with 14 rows is used for an audience of approximately 500. Two rows of benches on each side of the stage seat the Camp Staff and the podium in the shape of an "H" is at the center of the stage forward. Everything in the campfire area is made of cut stone except the benches which are made of solid white oak.

The remarks at the opening of the Ceremonial Grounds are worthy of quote-----

"It is proper that both the East Camp and the West Camp join together in the Friday Night Ceremonial Campfire. Symbolic of this union both the East and West Camp Program Directors join with me on this podium along with the Chief of Unami Lodge, Order of the Arrow.

Many things are significant here in these grounds. The benches upon which you sit-white oak- was fitly chosen for its durability and strength. The site is located in the newest part of the Reservation. The West Camp, where one can look back at the hills of the East Camp, where many years of good Scout Camping have taken place. The cut stones that were used are the cast offs by the stone masons many years ago as they cut stone for the streets of Philadelphia.

The construction was done by members and candidates of the Order of the Arrow, Camp Staff and local workmen who have meant so much to HART SCOUT RESERVATION. The traditions which have started this season will continue. How strong these traditions become depends upon each of you."

James Armour Camp Director

KORMAN CHAPEL

On August 22, 1962, the Korman Memorial Jewish Chapel was dedicated at the Hart Scout Reservation. The chapel is a memorial to Rabbi Benjamin Korman, father of Hyman Korman and grandfather of Max William Korman and Samuel Korman.

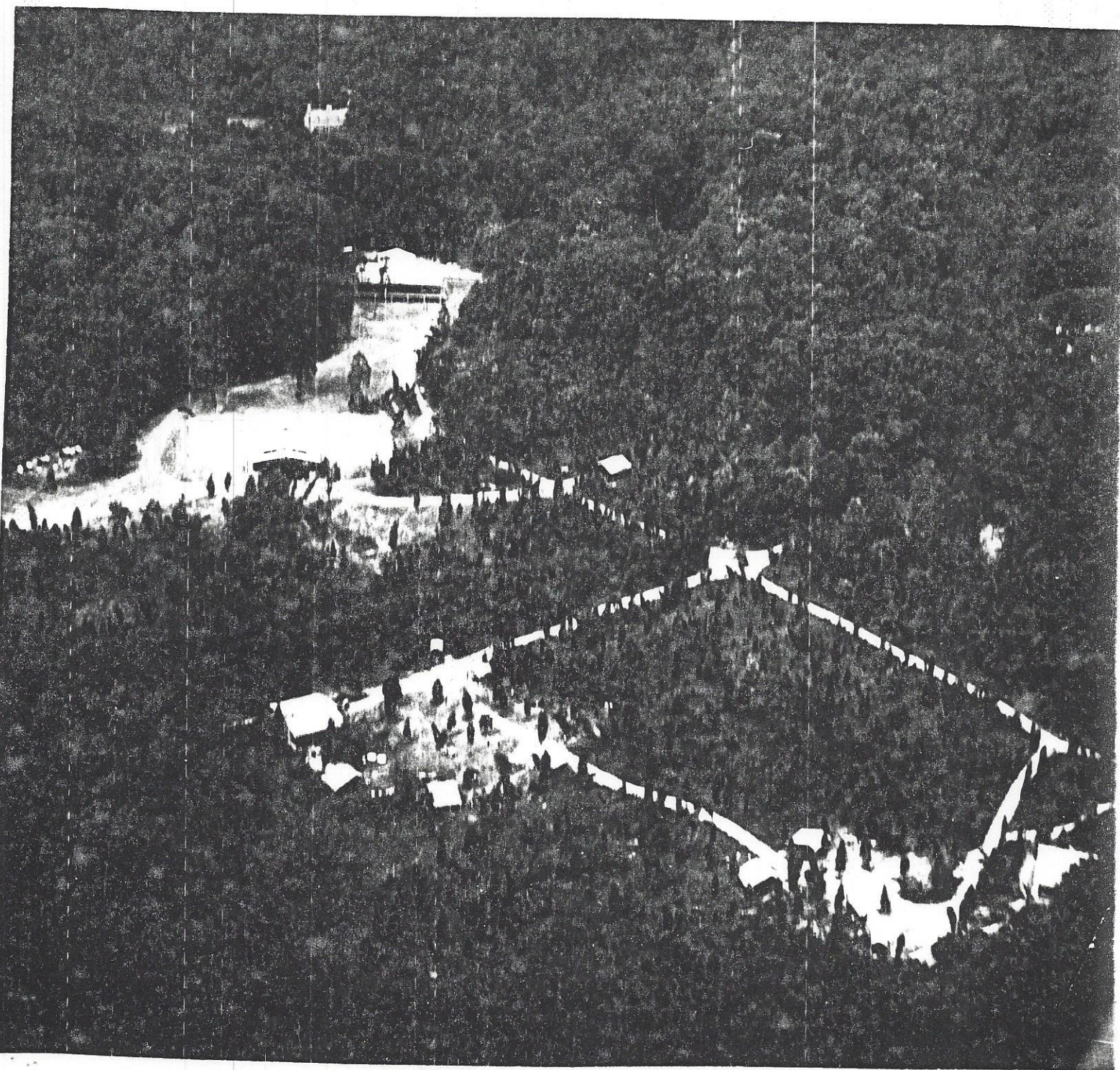
The Chapel Area, designed by Don Martyr of Davis, Poole and Sloan Architects, is laid out in the shape of the Star of David. The structure is two hyperbolic paraboloids. The Ark is similar in dimensions to the original Ark described in the Bible. It sits on two large boulders symbolic of Mount Sinai. The Ark is blue and white, symbolic of the national colors of Israel and trimmed in scarlet as was the tent which contained the original Ark as mentioned in the Bible. Seven rows of seats will accomodate 200 worshipers. These seven rows plus the seven supporting pillars on each side of the structure represent the seven branches of the Menorah. The design of the Chapel was an Architectural Prize Winner.

CHRISTIAN CHAPEL

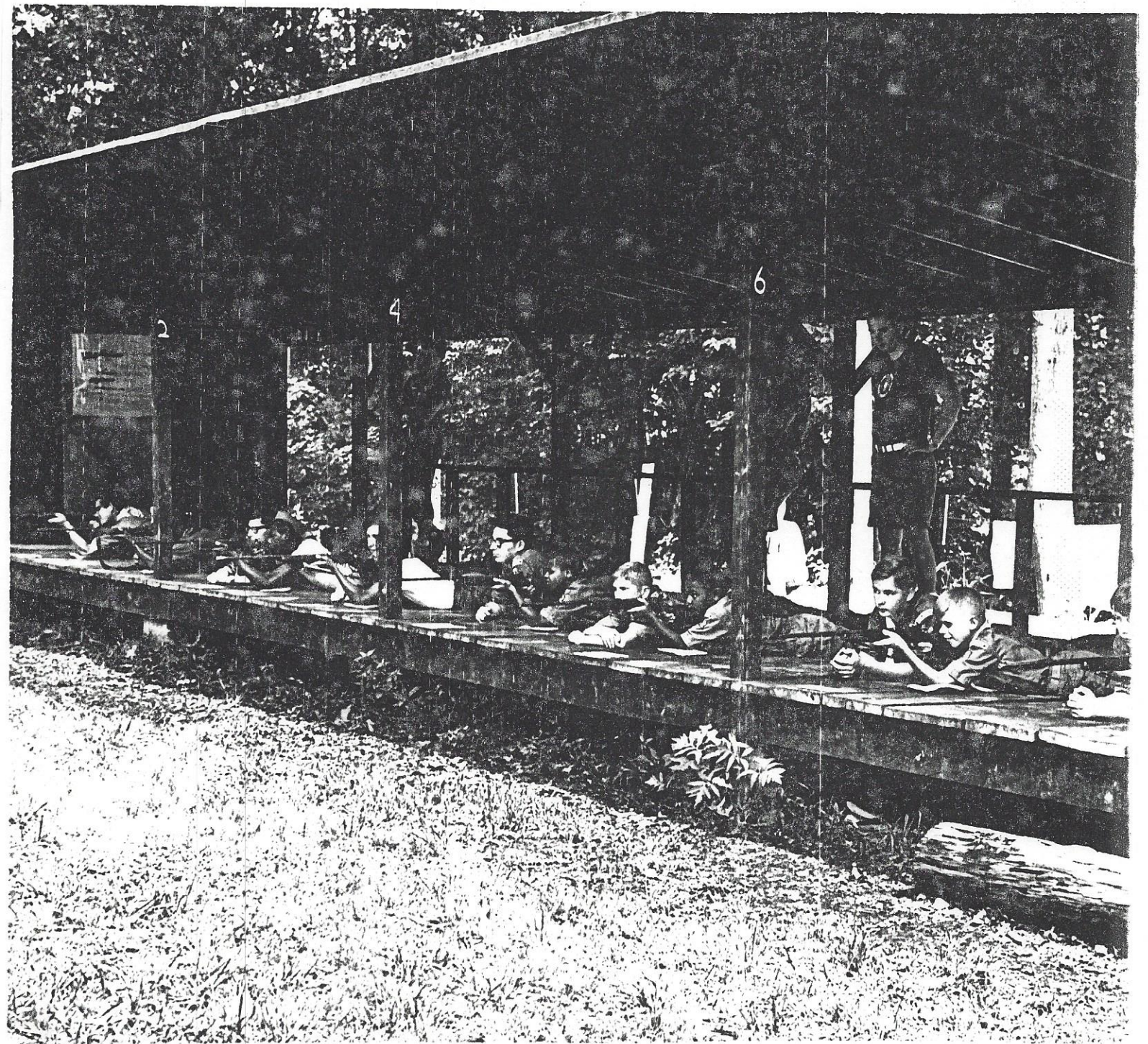
On June 28, 1964, the Hart Scout Reservation Christian Chapel was dedicated. The design for the Chapel was created by Davis, Poole and Sloan, Architects. Mr. Poole said that the inspiration for the design is the painting of Albert Durer's "Folded Hands in Prayer". The Chapel is the gift of Mrs. Walter S. Cornell, in memory of the family of the late Henry J. and Willemia B. Kuhn. The design of this Chapel won an Architectural Prize.

The front of the Chapel and pulpit face the out of door seating area which can accomodate 200 persons. The Christian Chapel is situated on a hill in an inspiring natural setting of the Hart West Camp. It has a 64' spire (peak of the crossed fingers) from which hangs a Christian Cross contributed by Mr. John S. McQuade, Jr. past president of the Philadelphia Council.

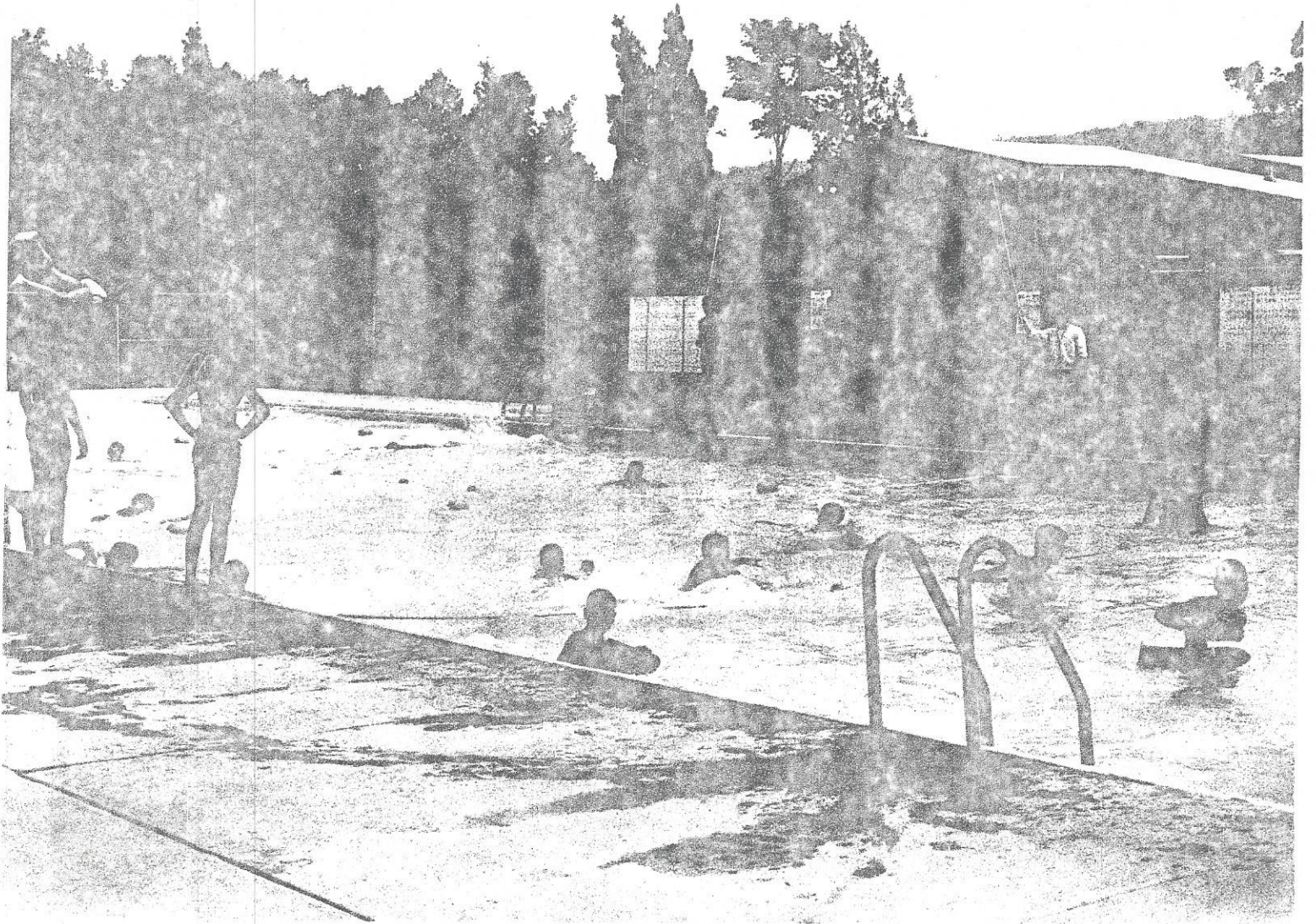
William Hacht donated the lectern and alter table. The lectern Bible was donated by Walter Deperven.



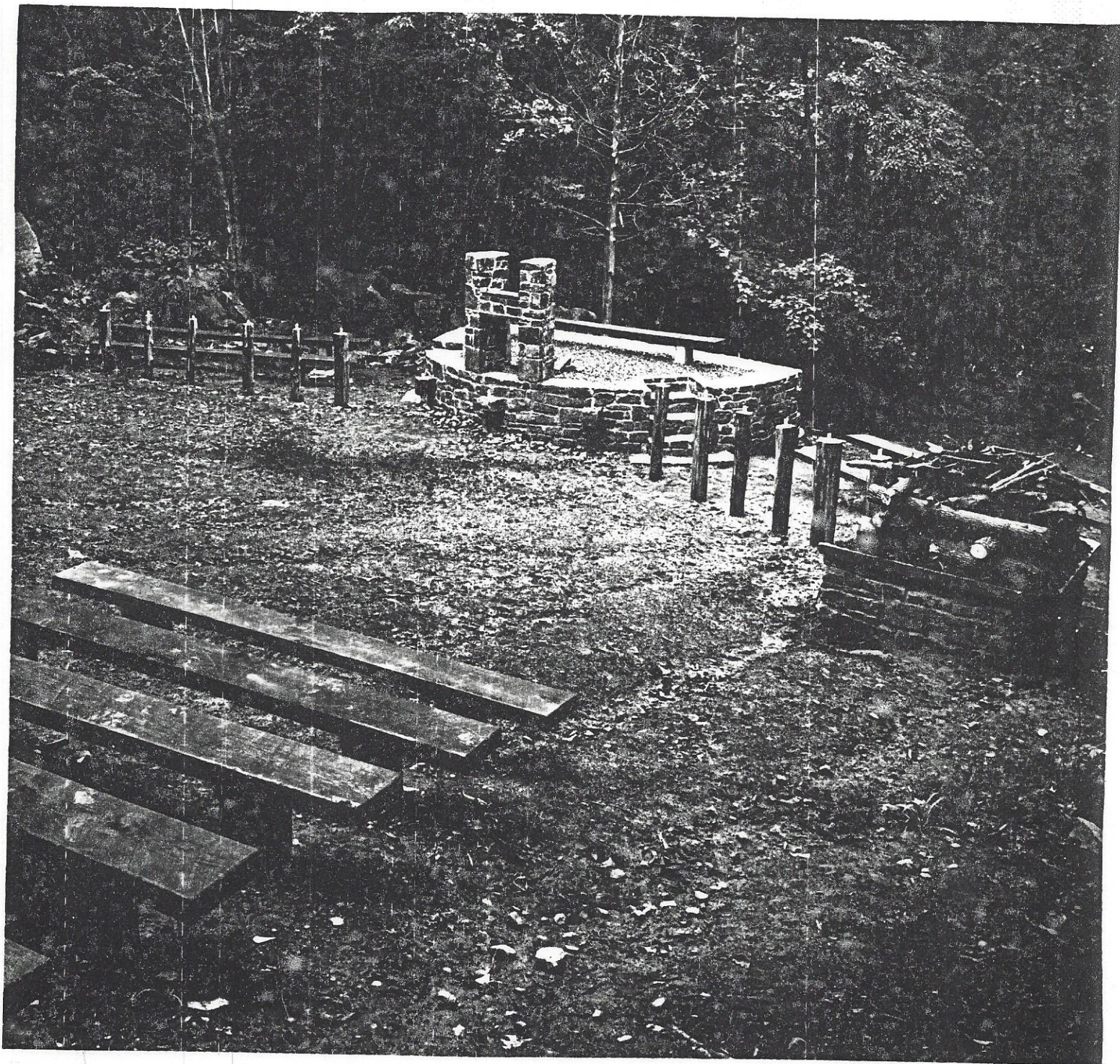
Aerial View - West Camp



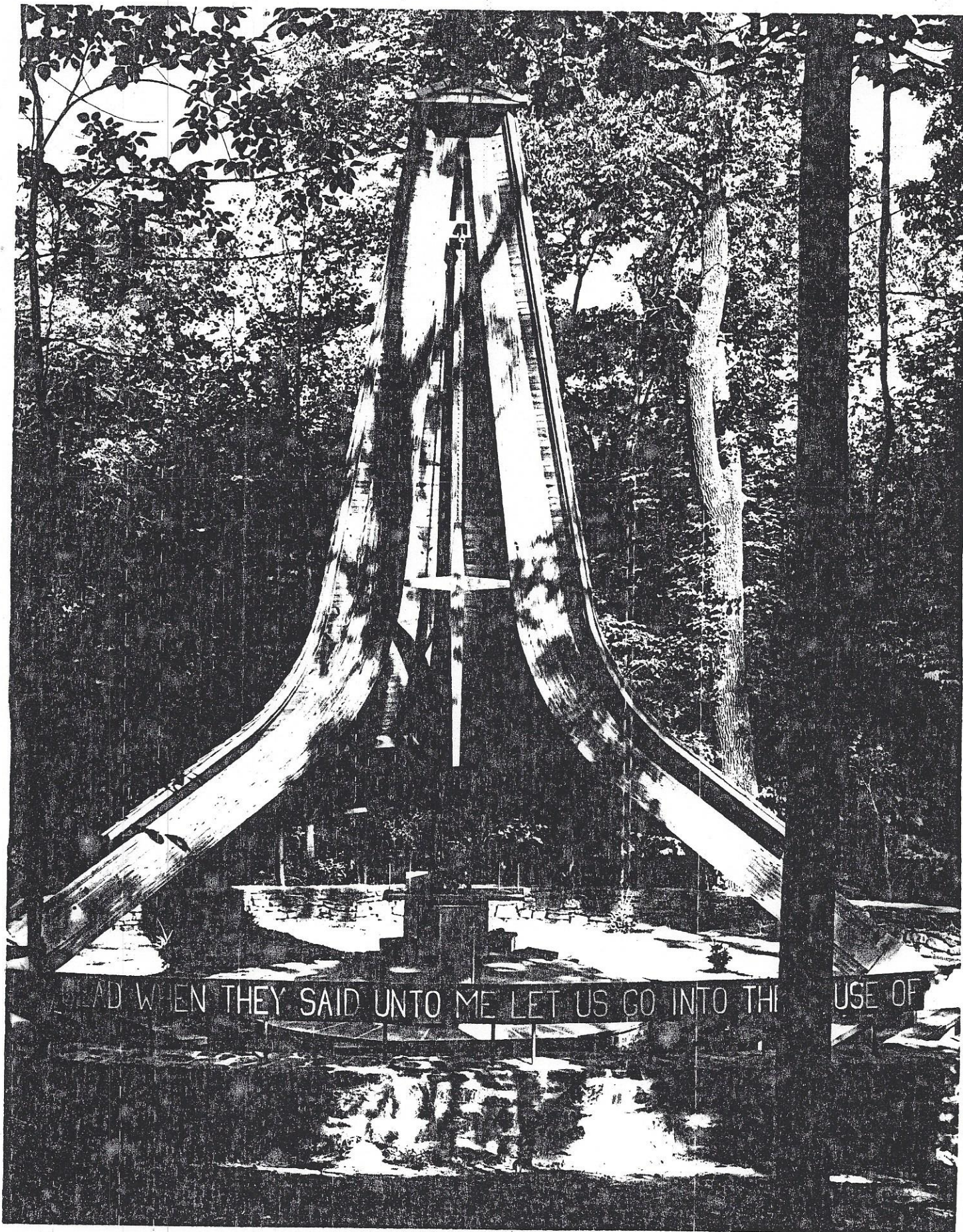
Rifle Range - West Camp



Swimming Pool - West Camp

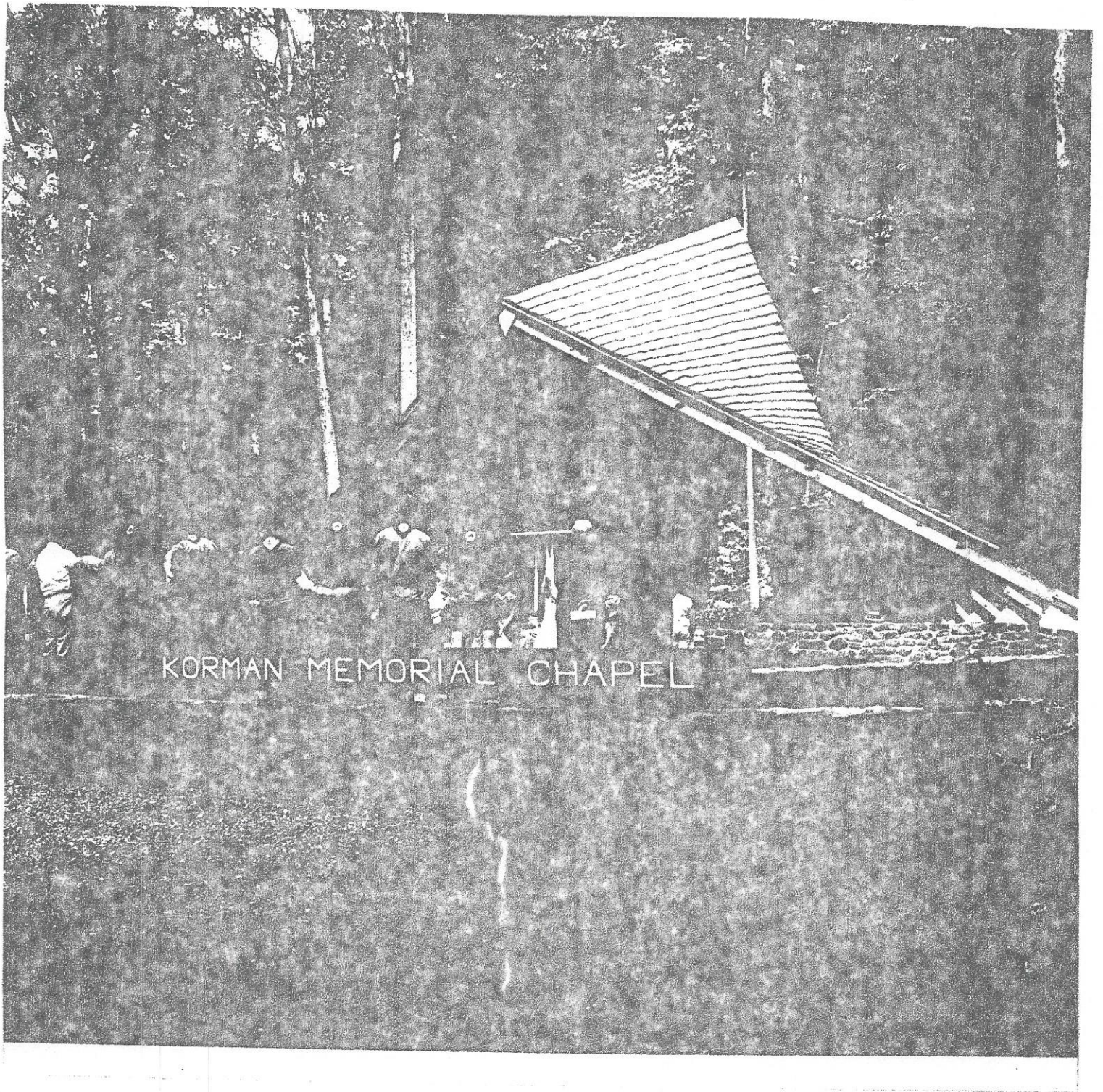


Ceremonial Grounds - West Camp

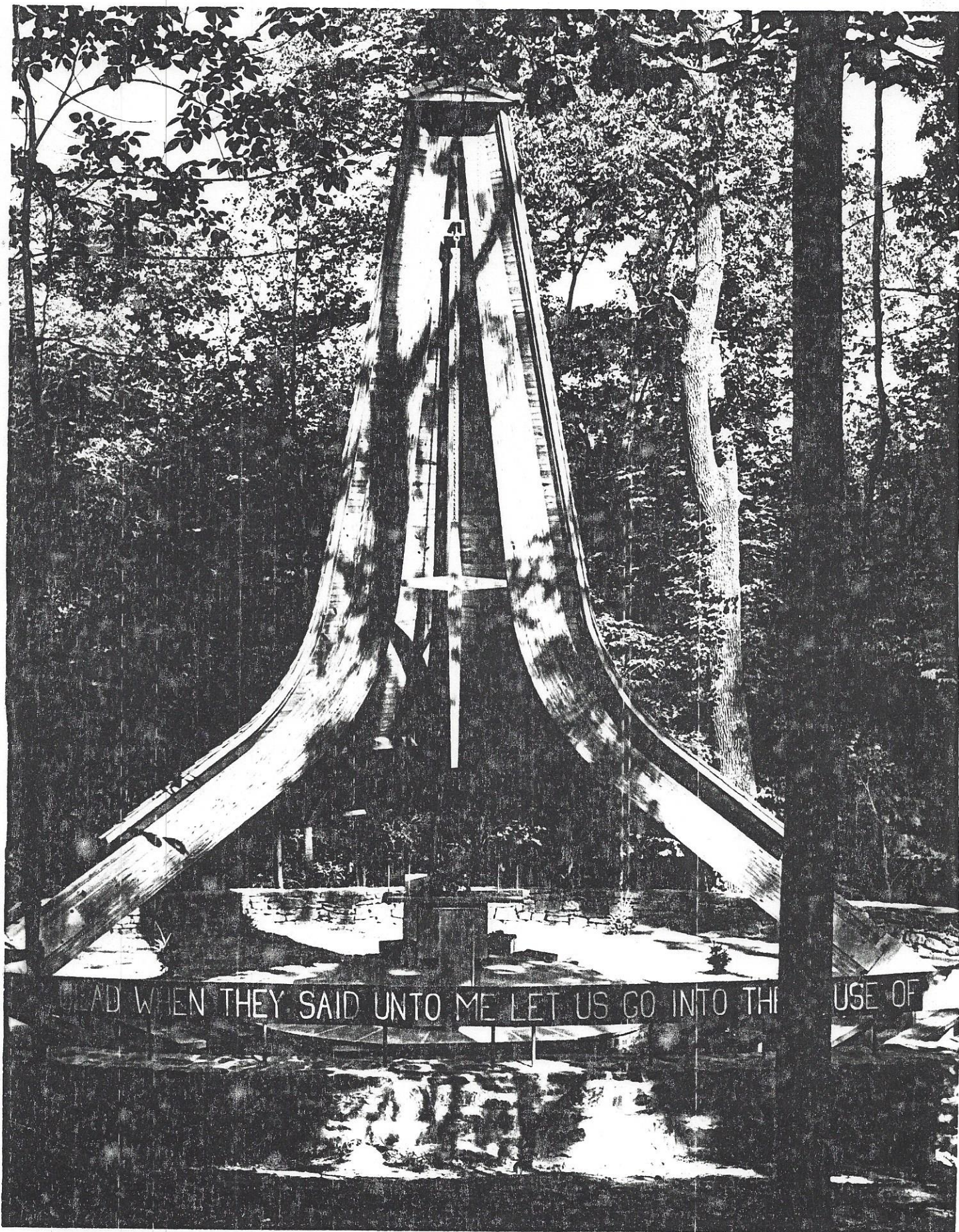


Photograph By Charles F. Sibre, Phila., Pa.

Christian Chapel - West Camp



Services Korman Memorial Chapel - East Camp



Photograph By Charles F. Sibre, Phila., Pa.

Christian Chapel - West Camp

KIWANIS LAKE

In the fall of 1964, construction was started on Kiwanis Lake thru monies donated by the Philadelphia Kiwanis Club. The construction was finished before the winter and the lake was dedicated on July 13, 1965. This lake covers a runoff area that will prevent erosion. This area can become a game preserve and an aid to the Conservation Program at the Hart Scout Reservation.

NEW PROGRAMS

Unique to Philadelphia Council, Hart Scout Reservation conducted the Baden Powell Provisional Troop 1 in 1965. The main points of the training included: Troop Organization, Splicing, Pioneering, Aquatics and Nature with the emphasis on how they could apply these skills in their own troop. The Scouts who were trained in Junior Leadership were better prepared to serve in their own units.

Improvements to the Reservation continue each year. In the 70's as a direct result of the Capital Fund Campaign, considerable refurbishing was done at Hart.

In 1973, the Dining Hall was converted to cafeteria style feeding, new tents were purchased, platforms constructed, patrol boxes and picnic tables made and new gear and equipment added.

In 1973, a Webelos Pilot Program was conducted for 90 boys with volunteer leadership along with the Camp Staff. This was a trial program for the National Office.

1975 saw the Cub Adventure Weekends each weekend of the camp season operating from Saturday afternoon until Sunday noon. During the ensuing years these weekend programs have averaged 1150 participants a season.

During the Bicentennial Year, 1976, the Executive Board of the Philadelphia Council saw fit to dedicate the Dining Hall and name it the NESBITT DINING HALL. "With Grateful Recognition and in Honor of Albert J. Nesbitt, Friend of Scouting, and in Memory of his Wife, Irene G. Nesbitt". This took place on Wednesday, August 11, 1976.

1977 saw another Pilot Program for the National Office in the conducting of a Cub Camp.

All of these programs have been most successful with continued interest by the Cubs with the goal of encouraging them to continue in the adventure program of the Scout Trail.

Over the years "Hart" has developed a tradition of fellowship, training and a growth in the Scouting Program. Camp Hart has offered training courses in Brownsea 22, T.L.D., T.L.T. and Woodbadge Programs. The camp has annually received the National Inspection "A" rating for camp operation. Camp Hart has been the host for International Scouts and they have added to the enrichment of the program and their

participation in the camp program has been an "extra" for our campers. Some of our International Scouts have come from Denmark, England, Sweden, Japan, Korea and Tunisia.

This is a capsulized version of Camp Hart from its inception in 1930 to the present date. Many traditions, fond memories, learning experiences and lasting friendships have made our lives richer and more meaningful because we have been a camper at Hart Scout Reservation. May all of these things continue to grow in the years to come.

* * * * *

HART SCOUT RESERVATION SONG

To Hart we sing, Where fun is never ending, Where
Scouts are close to God on igh.

Where sing the birds in sunshine's golden glimmer-
ing, And stars above, Light up the night time sky.

Hail to the Chiefs, the Pioneers and Delawares. Thy
praises ring above Unami's Falls. Where Scouting friend-
ship, strong and never severing, At Hart Scout Reser-
vation, binds us brothers all.

* * * * *

Compiled and edited by Walter C. Crothers, Jr. and M. Graham Park, Jr.

A special thanks to the following for their help in gathering material, information and facts to make this booklet possible.

John Baskin
Robert Gilbert
Roy Imsick
S.A. "Lex" Jervis
George H. Keller

Robert McClosky
Turner Moon
Albert G. Mueller
Walter V. Rutherford
Adelaide Park - Typist

CAMP DIRECTORS

HART SCOUT RESERVATION

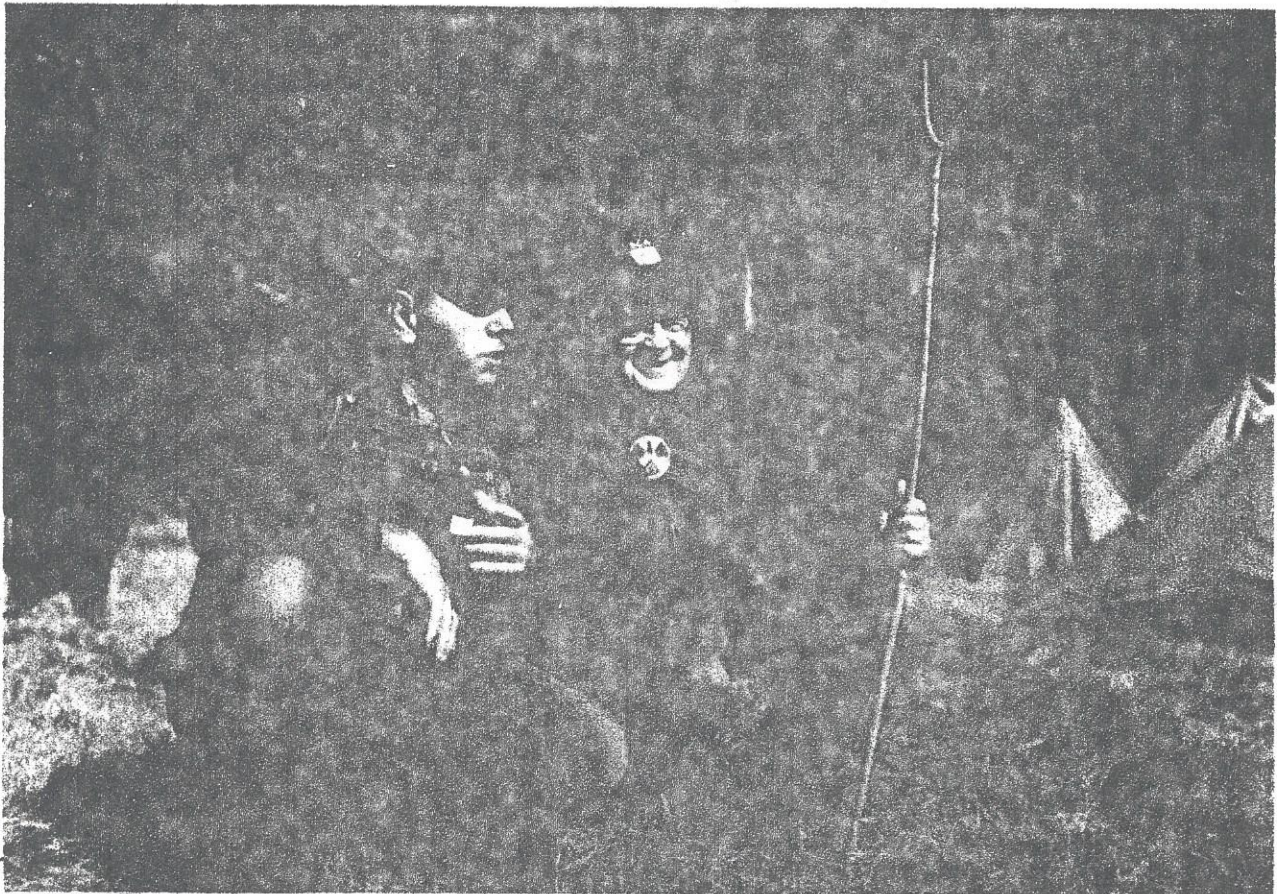
1930 ----
 1931 ----
 1932 Joseph Pattison
 1933 Par Danforth
 1934 Rufus Davis
 1935 H. Paul Keebler
 1936 H. Paul Keebler
 1937 H. Paul Keebler
 1938 Robert Neeley
 1939 Robert Neeley
 1940 Robert Neeley
 1941 Walter V. Rutherford
 1942 Howard Boyd
 1943 Fred Bach
 1944 Fred Bach
 1945 Joseph Feltis
 1946 Joseph Feltis
 1947 John W. Morris
 1948 Turner Moon
 1949 Fred Bach
 1950 Turner Moon
 1951 Turner Moon
 1952 Chuck Kaufman
 1953 Robert Sehl
 1954 Joseph Williams
 1955 Joseph Williams

1956 Joseph Williams
 1957 Joseph Williams
 1958 James Armour
 1959 James Armour
 1960 James Armour
 1961 James Armour
 1962 James Armour
 1963 William Nell
 1964 William Nell
 1965 William Nell
 1966 William Nell
 1967 William Nell
 1968 William Nell
 1969 William Nell
 1970 Kirk Thieroff
 1971 Robert Horvath
 1972 Russell Leinbach
 1973 Lex Jervis
 1974 Russell Swenson
 1975 Russell Swenson
 1976 Lex Jervis
 1977 Lex Jervis
 1978 Lex Jervis
 1979 Robert Lane
 1980 M. Graham Park, Jr.



PERRY LONG

Perry Long began work for Philadelphia Council when the property designated for Hart Scout Reservation was purchased in 1933. He worked directly with the firms which constructed East Camp in 1934. All materials which were needed were carried to the sites on the workmen's backs in coalbags. From this beginning, thru the 1950's with the development of West Camp, and until now, Hart Scout Reservation has gained many fine traditions and operational procedures because of Perry Long. The fine condition of the camp's facilities and natural beauty show this. Perry retired March 1968, however his retirement was postponed until June 30, 1970 when he concluded 37 years of devoted service to the boys and leaders of Philadelphia.



PERRY LONG AND TURNER MOON

